

8M SERIES LED FLOODLIGHTS



8M SERIES LED FLOODLIGHTS



IK 09

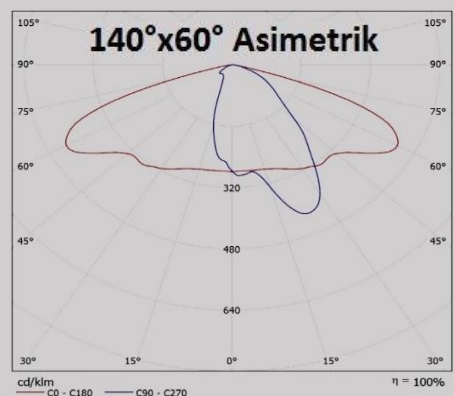
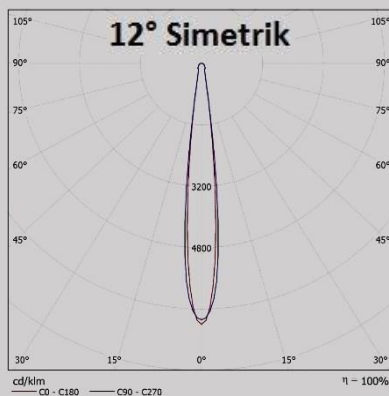
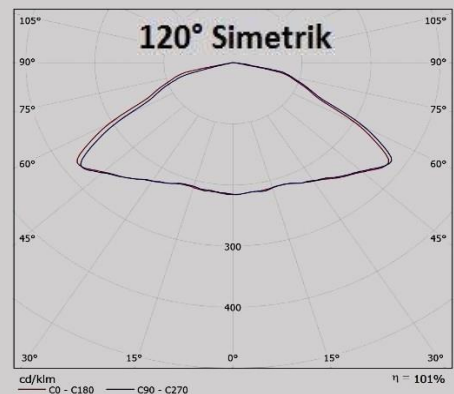
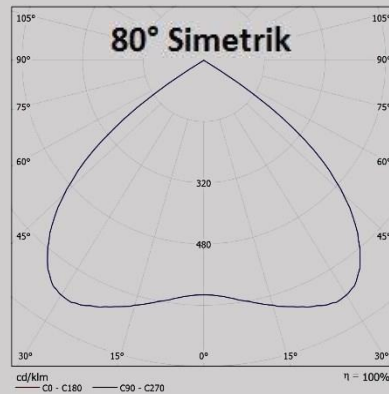


IP66

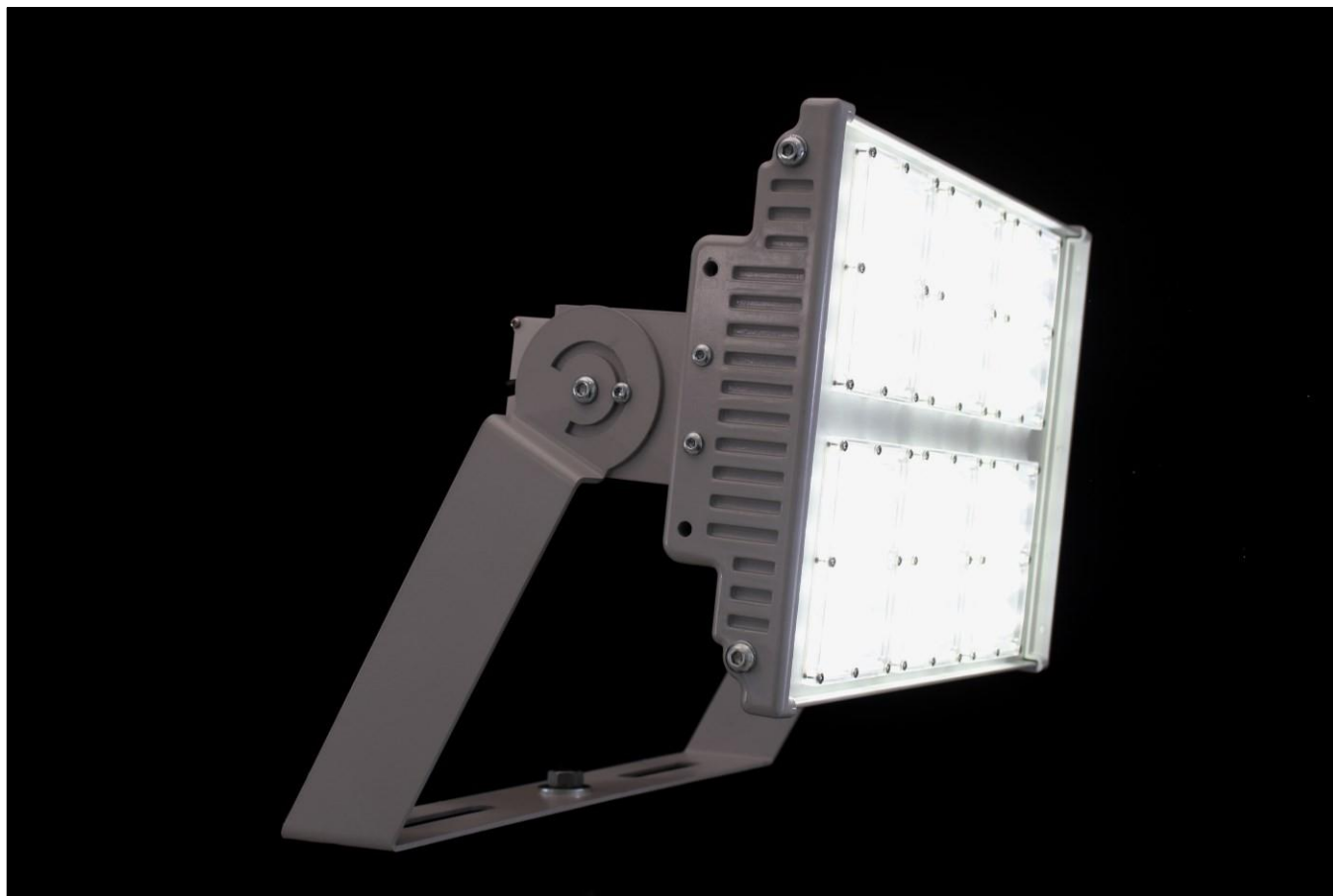


Voltage / Frequency	100-240 VAC & 50/60Hz							
Power Factor	$\cos\phi \geq 0,95$							
Power (W)	240W	260W	280W	300W	320W	330W	340W	350W
Lumen (lm.)	31250	33250	35250	37200	38700	39250	39750	40250

Light Distribution
Curves
and
FWHM
Light Angles

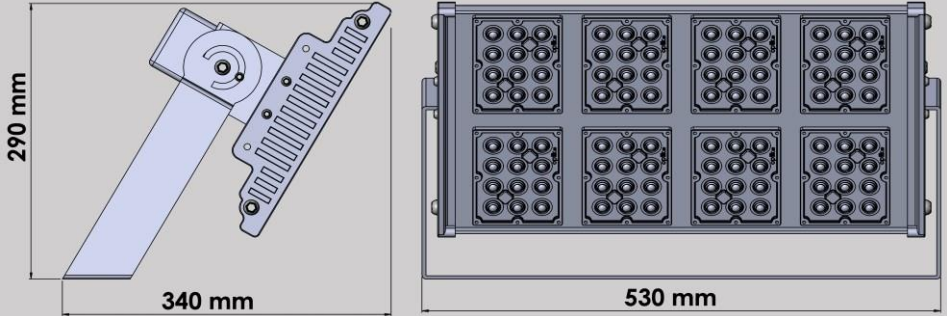

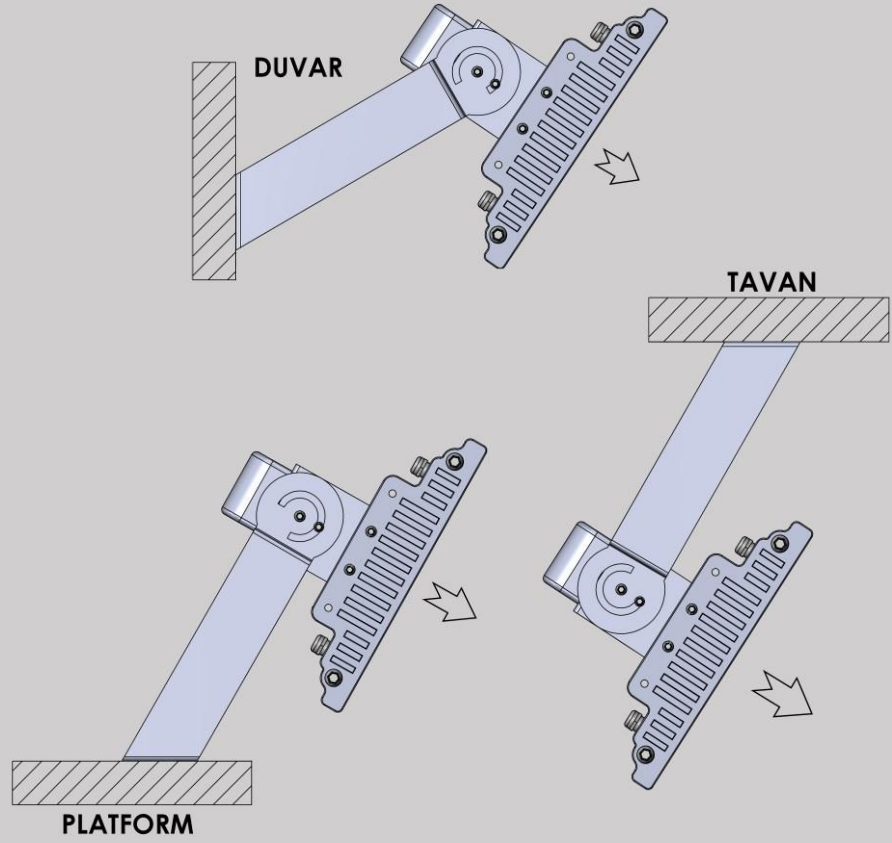


8M SERIES LED FLOODLIGHTS



Optical Unit	12° / 80° / 120° / 140°X60° PC Lens Modules
LED	96 pcs.
LED Type	High Power LED
Light Color	CRI ≥ %70, CCT : 3000-6500K
Luminaire Housing and Housing Paint	It consists of aluminum extrusion cooler body, injection molded parts and electrostatic oven painted and sheet metal elements.
Refractory Structure	IP 66 consists of LENS modules. Due to modular structure, other modules from a module failure are not affected and Lighting continuity is provided.
Grounding Continuity	Class I - Grounding Should Be Done !!
Certificate&Standard	TSE 8700 EN 60598-2-5 & 60598-1
Product Certificate	TSE Certificate of Conformity
Efficiency	110-130 lm/W
Impact Resistance	IK 09
IP Protection	IP 66
Operation Temperature	-30C / +60C
Application	Parking, Garden, Car Park, Area Lighting
Waight	9 kg

8M SERIES LED FLOODLIGHTS

Dimensions	
Mounting	LED Projector, rotate 360 ° by turning left and right done. Platform, Ceiling and Wall to be mounted suitable. Light emitting unit in the 0-270 ° angle range It is suitable to be made.
Angle Adjustment 0-270 °	 0-270 DEG ARALIĞINDA PROJEKTOR AÇI AYARI
Platform, Ceiling and Wall Mounting	

APPLICATION



APPLICATION



DATASHEET

